



R13S

COMBAT-READY, 13" FULLY-RUGGED LAPTOP PC

R13S, the ultra-rugged laptop is designed for users work in the most extreme environments. With MIL-810G, MIL-461F, and IP65 certification, it can operate under the most vigorous condition; from searching desert to freezing terrains and from stealth mission to the heart of combat zone. It also packs Intel® 6th Generation Skylake-U CPU to run the most demanding tasks. With TPM, quick HDD release function and fingerprint scanner, R13S offers the undisputed security for data protection.

EXTREMELY RUGGED FEATURES

It is built with high quality of magnesium alloy that guarantees to perform. It can work at extremely temperature of -30° C to 60° C; passed the 40G functional shock test, and 48 inches high drop test.

Secured Dual Battery Lock

The lock prevents the battery from disengaging during vigorous vibration to ensure without interruption at any critical task.

LONG BATTERY LIFE

Fast Charge

R13S can quick-charge its high-capacity, 9-cell smart battery pack for up to 90% of the capacity within merely 3 hours.

Hot Swap

Main battery provided up to 14 hrs battery life.

Bridge battery designed for main battery hot swap purpose to extending unlimited battery life.



STEALTH MODE

DURABOOK's unique stealth mode can be applied in special mission such as stakeout operation and raids. One click immediately turns off all sounds and emitting lights while all programs remain running in the background.

EXCEPTIONAL OUTDOOR DISPLAY

Equipped with a 13.3" TFT LCD (1024 x 768) screen at 950 nits with sunlight readable resistive touch panel, R13S offers excellent screen viewing even under direct sunlight.

SUPERIOR SECURITY

To protect against unauthorized access to protected data, R13S is equipped with various devices of secured tools.

- ✔ Trusted Platform Module (TPM) chip
- ✔ Biometric Fingerprint Scanner
- ✔ Quick Release HDD : It allows for less than 5-second ejection of disk drive in a situation when protecting valuable data.

Specifications

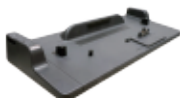
| | |
|----------------------------|--|
| EXTREME Environment | <p>Gunfire Shock MIL-STD 810G Method 519.6, Annex D, Table 519.6D-I</p> <p>Hazardous Shock MIL-STD 810G Method 516.6 Procedure V, 75G's @8ms, 3 shocks/axis/direction, total 18 shocks</p> <p>Helicopter Integrity MIL-STD 810G, Method 514.6, Procedure I, Category 24, Fig. 514.6E-2</p> <p>Blowing Rain MIL-STD 810G, Method 506.5, Procedure II, 30 Minutes, 70MPH</p> <p>Blowing Dust MIL-STD 810G, Method 510.5 Procedure I, Air Flow 1725 FPM, (23°C~60°C for 12 hours)</p> <p>Explosive Atmosphere MIL-STD 810G Method 511.5, Procedure I</p> <p>Freeze Thaw MIL-STD 810G, Method 524, Procedure III</p> <p>Acidic Atmosphere MIL-STD 810G, Method 518.1</p> <p>Solar Radiation MIL-STD 810G, Method 505.5, Procedure II</p> <p>Salt Fog MIL-STD 810G, Method 509.5</p> <p>Military EMC MIL-STD 461F Level II (with MIL-STD 461F adaptor)</p> |
| IP65 | <p>IP X5 IEC 529 (EN6052)</p> <p>IP 6X IEC 529 (EN60529)</p> |
| Rugged Features | <p>Drop MIL-STD 810G 516.6 Procedure IV, 48 inches high with 26 drops to 2" plywood over concrete</p> <p>Vibration General Integrity MIL-STD 810G, Method 514.6, Procedure I, Category 24, Fig. 514.6E-1</p> <p>Vibration Truck Transport ASTM 4169, 11.5.2 Random test, Assurance Level II</p> <p>Functional Shock MIL-STD 810G Method 516.6 Procedure I 40G's @11ms, 3 shocks/axis/direction 18 total shocks</p> <p>Rain Test MIL-STD 810G, Method 506.4, Procedure II, 40 PSIG, min 6 axis, 4 in/hour</p> <p>Temperature Shock MIL-STD810G, Method 503.5, Procedure I-C,3 cycles</p> |
| Environment | <ul style="list-style-type: none"> ■ Temperature Operating : -30°C ~ 60°C² (MIL-STD 810G 501.5 Procedure II) Storage : -51°C ~ 71°C (MIL-STD 810G 501.5/502.5 Procedure I) ■ Humidity Operating : 5% ~ 95% (MIL-STD 810G 507.5 Procedure II) ■ Altitude Operating : 15,000 feet (MIL-STD 810G 500.5 Procedure II) Non Operating : 40,000 feet (MIL-STD 810G 500.5 Procedure I) |

| | |
|---------------------------|---|
| Operating System | ■ Genuine Windows® 10 Professional ¹ |
| CPU | ■ Intel® 6th Generation Sky Lake -U |
| Display | <ul style="list-style-type: none"> ■ 13.3" XGA(1024x768) TFT LCD ■ Single resistive Touch Panel ■ Sunlight Readable 950 nits Display |
| Memory | ■ Two DDR4 sockets (Max. 32GB) |
| Storage | ■ 2.5" SATA HDD or SSD ¹ |
| Optical Disk Drive | ■ Super-multi ODD or Blue-ray Drive Writer |
| Keyboard | ■ Illuminated keyboard with adjustable brightness |
| Audio | <ul style="list-style-type: none"> ■ Intel® High Definition Audio ■ 1.5KHz Speaker x 2 / 75dB ■ Analog Microphone |
| Communication | <ul style="list-style-type: none"> ■ Two 10/100/1000 Mbps Ethernet ■ Intel® Dual Band Wireless AC8260 (a/b/g/n/AC) & Bluetooth 4.2¹ ■ LTE WWAN¹ ■ GPS¹ (UBLOX-NEO-M8N) |
| Security | <ul style="list-style-type: none"> ■ Smart Card Reader¹ ■ Fingerprint Scanner¹ ■ Computrace® Ready ■ Intel® vPro ■ TPM 2.0 ■ Kensington Lock ■ Stealth Mode / Night Vision Mode ■ Quick Release HDD |
| Button | <ul style="list-style-type: none"> ■ Power ■ RF ON / OFF ■ Programmable button x1 |
| Expansion Slots | <ul style="list-style-type: none"> ■ One Smart Card Reader¹ ■ One SD Card supports SDXC card ■ One PCMCIA or Express Card 54¹ |
| I/O Ports | <ul style="list-style-type: none"> ■ Two USB2.0 ■ One USB3.0 ■ One headphone jack ■ One microphone jack ■ Two RJ-45 ■ One VGA port or HDMI or Second RS232 ■ One RS232 port ■ One Docking connector ■ One DC in ■ Three RF pass through for WLAN and GPS and WWAN |
| Battery | <ul style="list-style-type: none"> ■ Primary 9-Cells 7800 mAh : 14 hrs (with SSD)³ ■ 6-Cells 3800mAh^{1,4} : 7 hrs |
| AC Adaptor | ■ 100V - 240V, 90W ; 19V |
| Dimension | ■ 306 mm (W) x 294 mm (D) x 58 ~ 65 mm (H) |
| Weight | ■ 3.6 Kg / 7.9 lbs ⁵ |

Accessories



➤ Vehicle Dock



➤ Office Dock



➤ Car Adaptor

1. Optional items
2. With extended temperature SSD or HDD heater
3. Mobile Mark Life Test Method (Battery life may vary with product configurations, settings, usage patterns and operating environment.) / (12 hrs with HDD)
4. 6 cell battery pack is mutually exclusive with Optical Disk Drive
5. Actual weight may vary with different configurations

