

Interactive Part Locator

HP ProBook 430 G8 Notebook PC

Welcome to the interactive part locator for the
HP ProBook 430 G8 Notebook PC

Here's how to use it...

[External Views](#) (Click the link to navigate to the views)

On this page you will find large icons of each of the external views of this product. To view a specific view in greater detail, simply click that view.

[Parts List](#) (Click the link to navigate to the parts)

On this page, you will find a list of all of the replaceable parts for this product. To view a specific part and its location in the product, click the part name in the list.

That's it! On every page there is a link that brings you back to either the External Views or the Parts List, enabling you to navigate to whatever view or part you wish to review.

External Views

[Back to Welcome page](#)



Front



Left



Right



Rear



Top



Display



Internal



Bottom

[Go to Parts List](#)

Front View

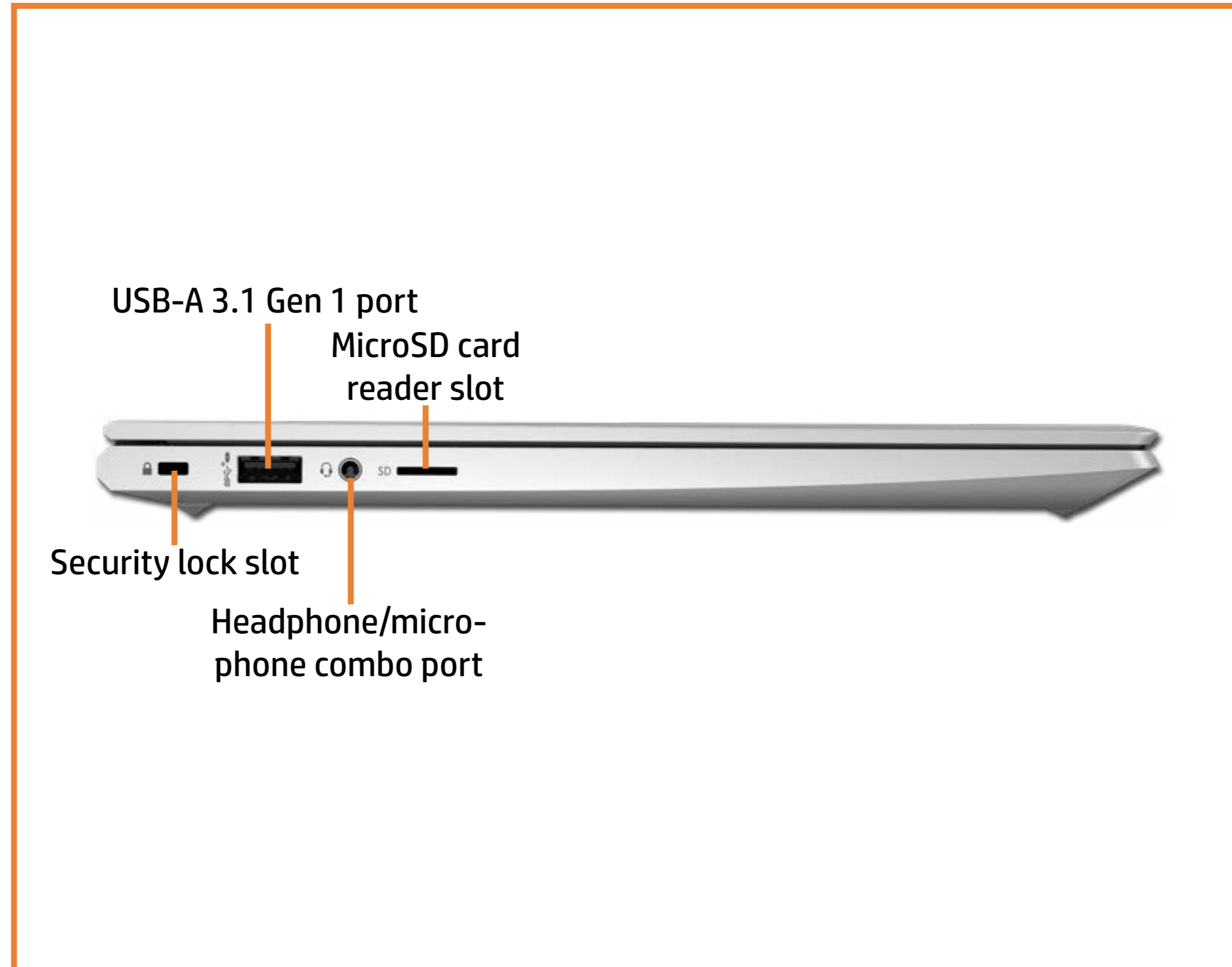
[Back to External Views](#)



[Go to Parts List](#)

Left View

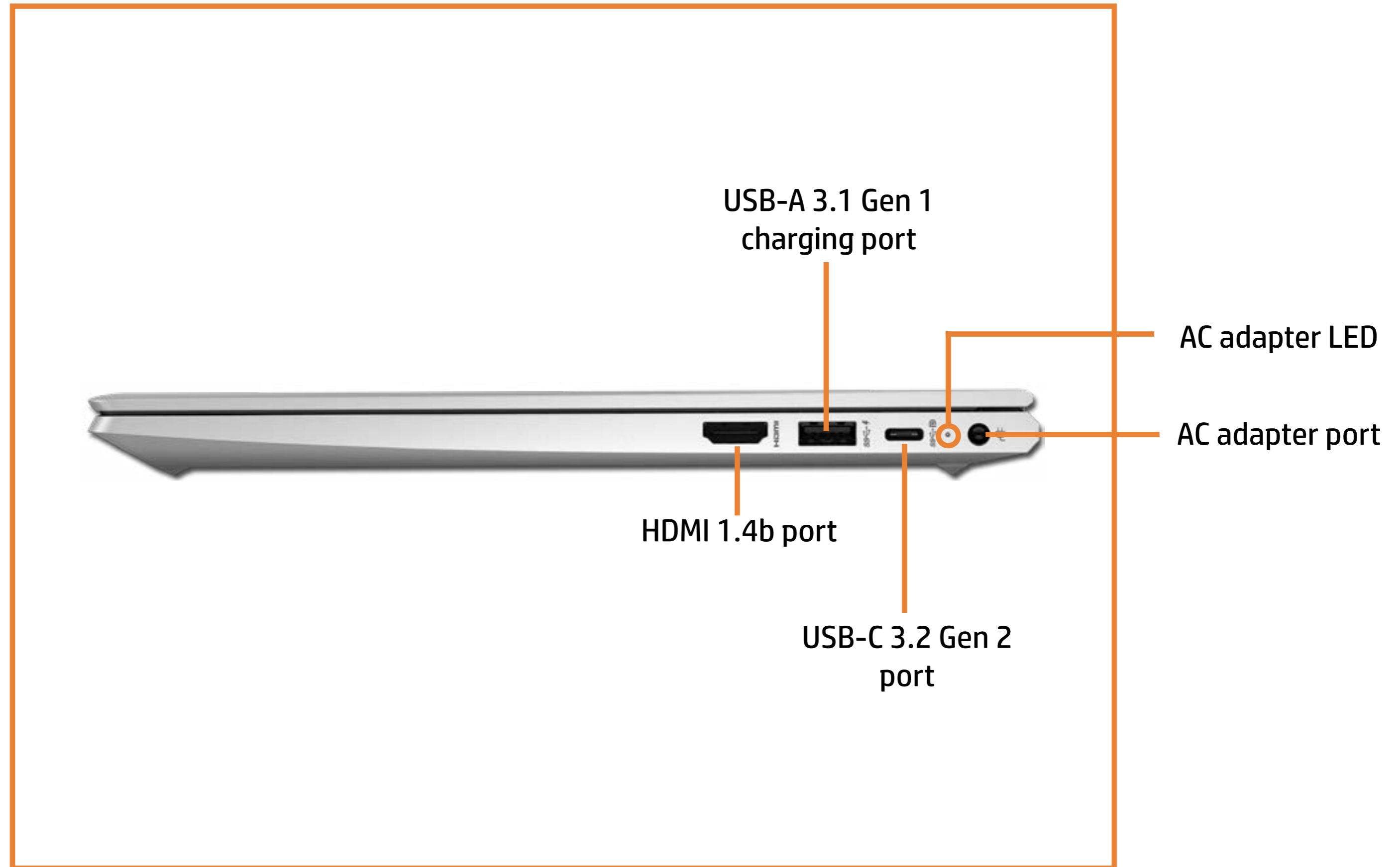
[Back to External Views](#)



[Go to Parts List](#)

Right View

[Back to External Views](#)



[Go to Parts List](#)

Rear View

[Back to External Views](#)

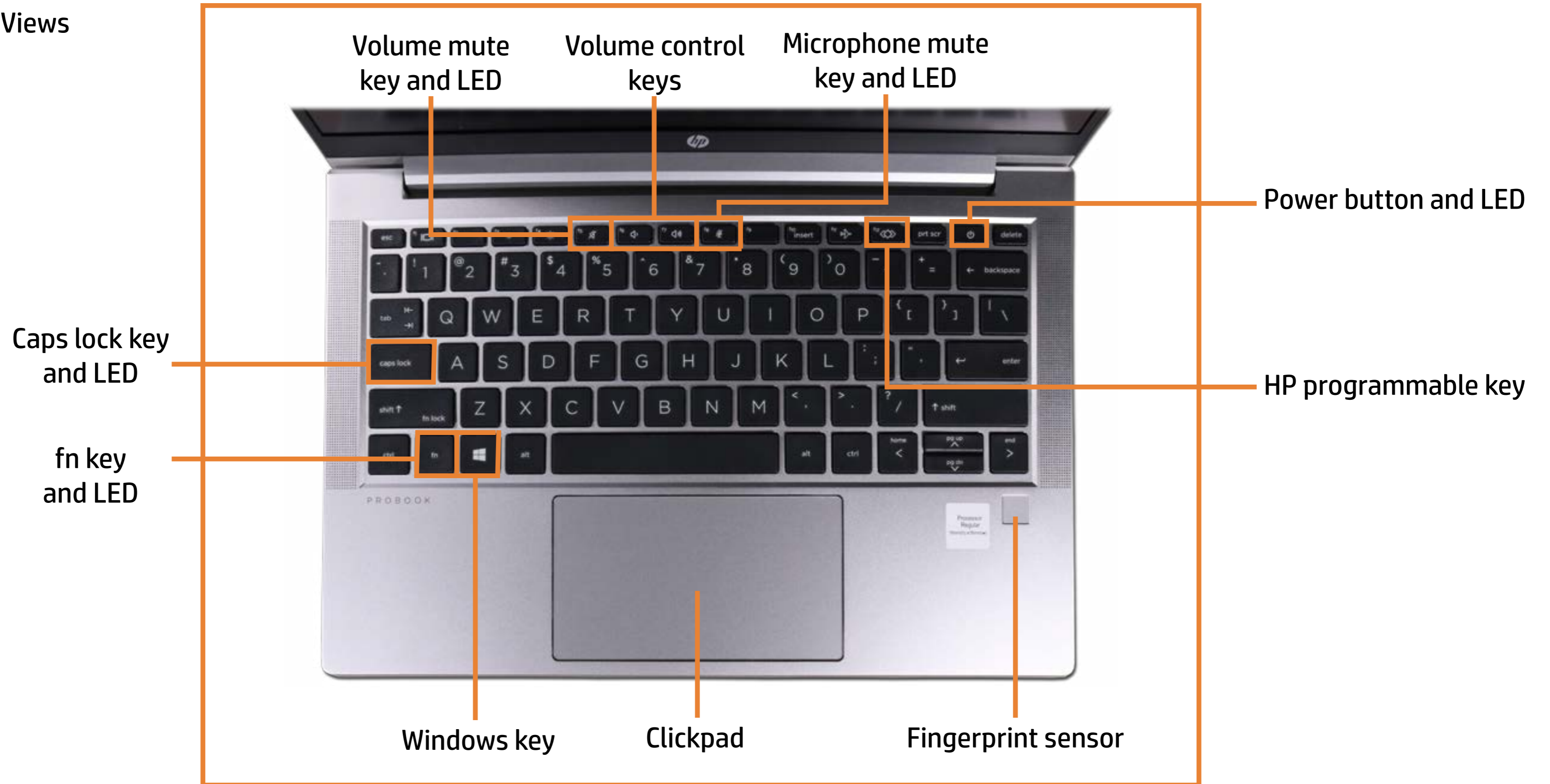


ProBook logo

[Go to Parts List](#)

Top View

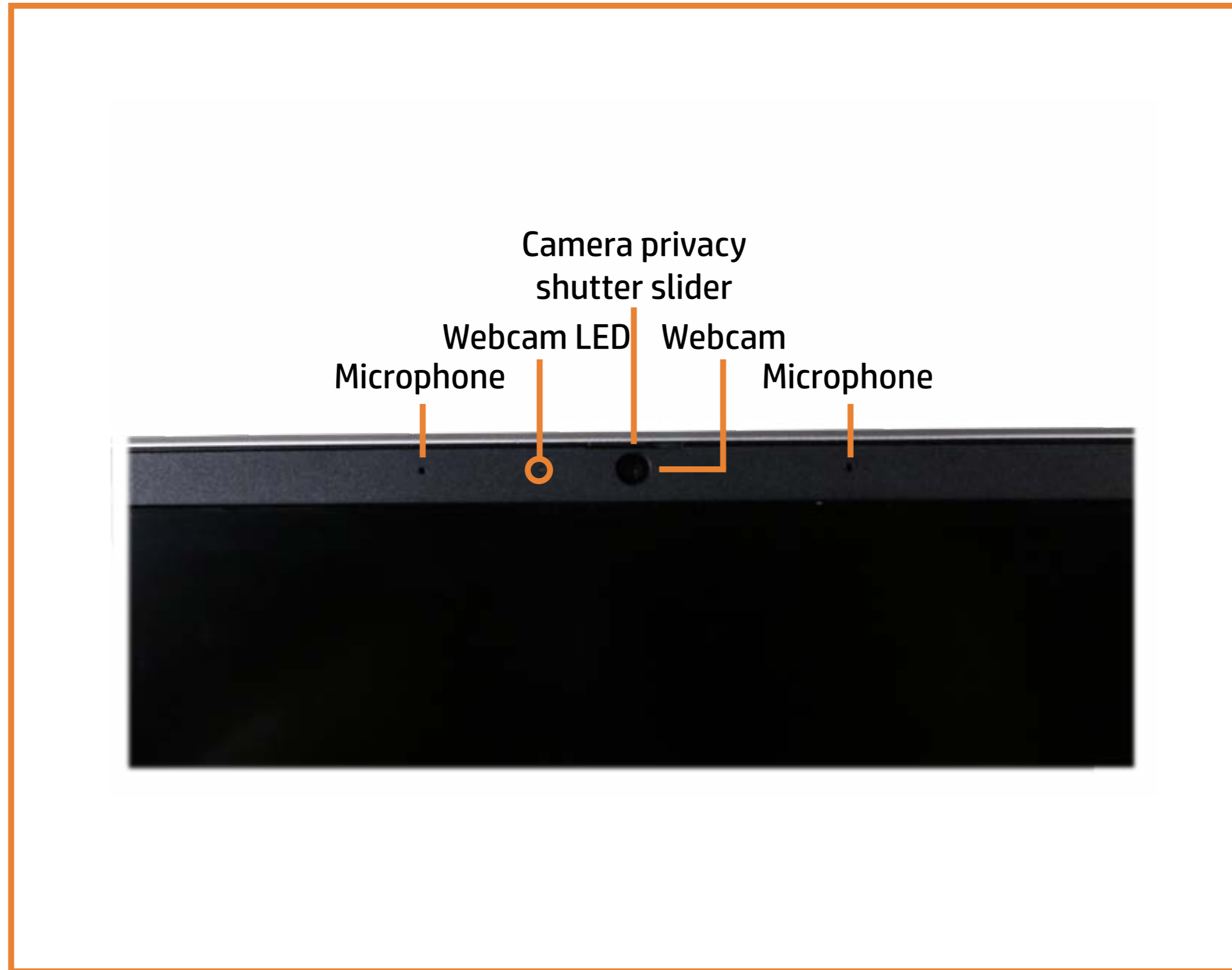
[Back to External Views](#)



[Go to Parts List](#)

Display View

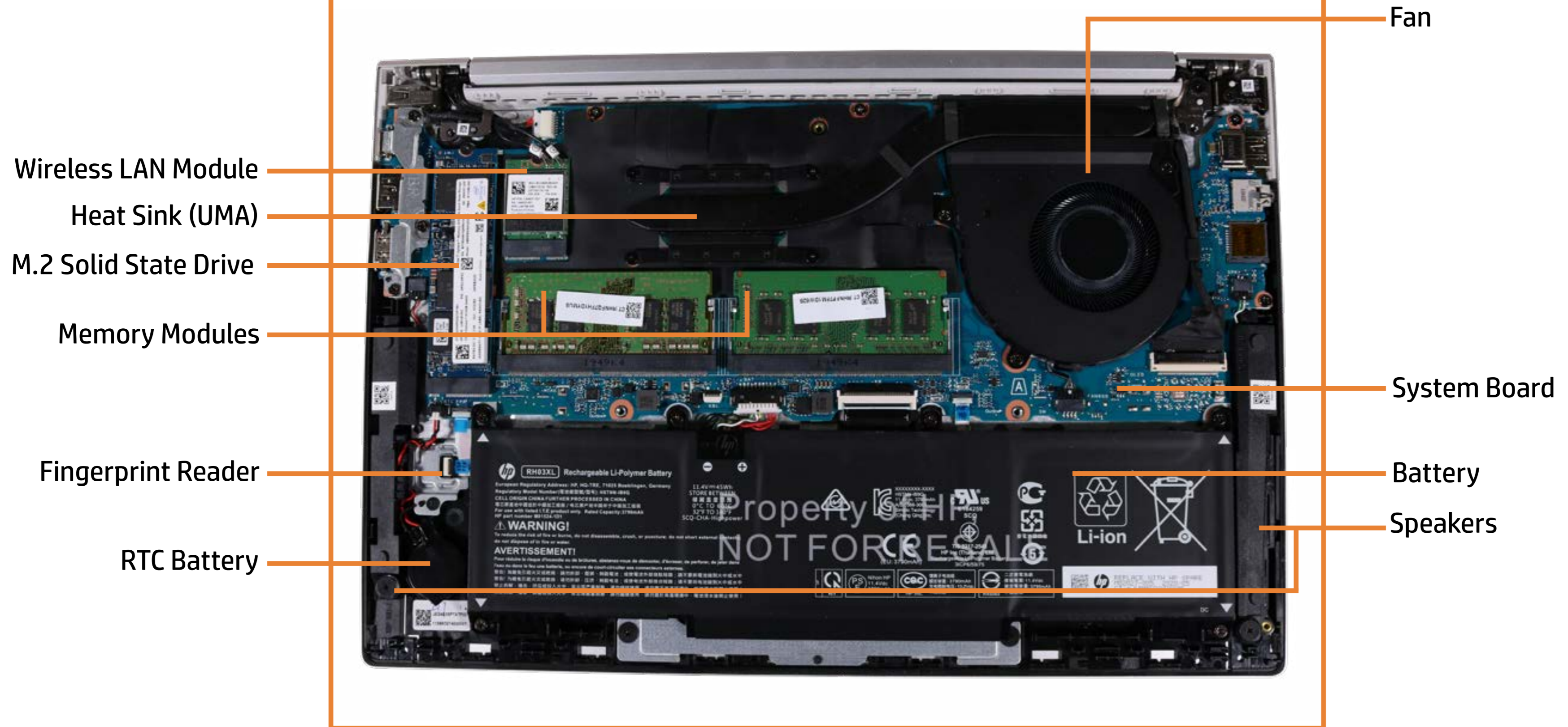
[Back to External Views](#)



[Go to Parts List](#)

Internal View

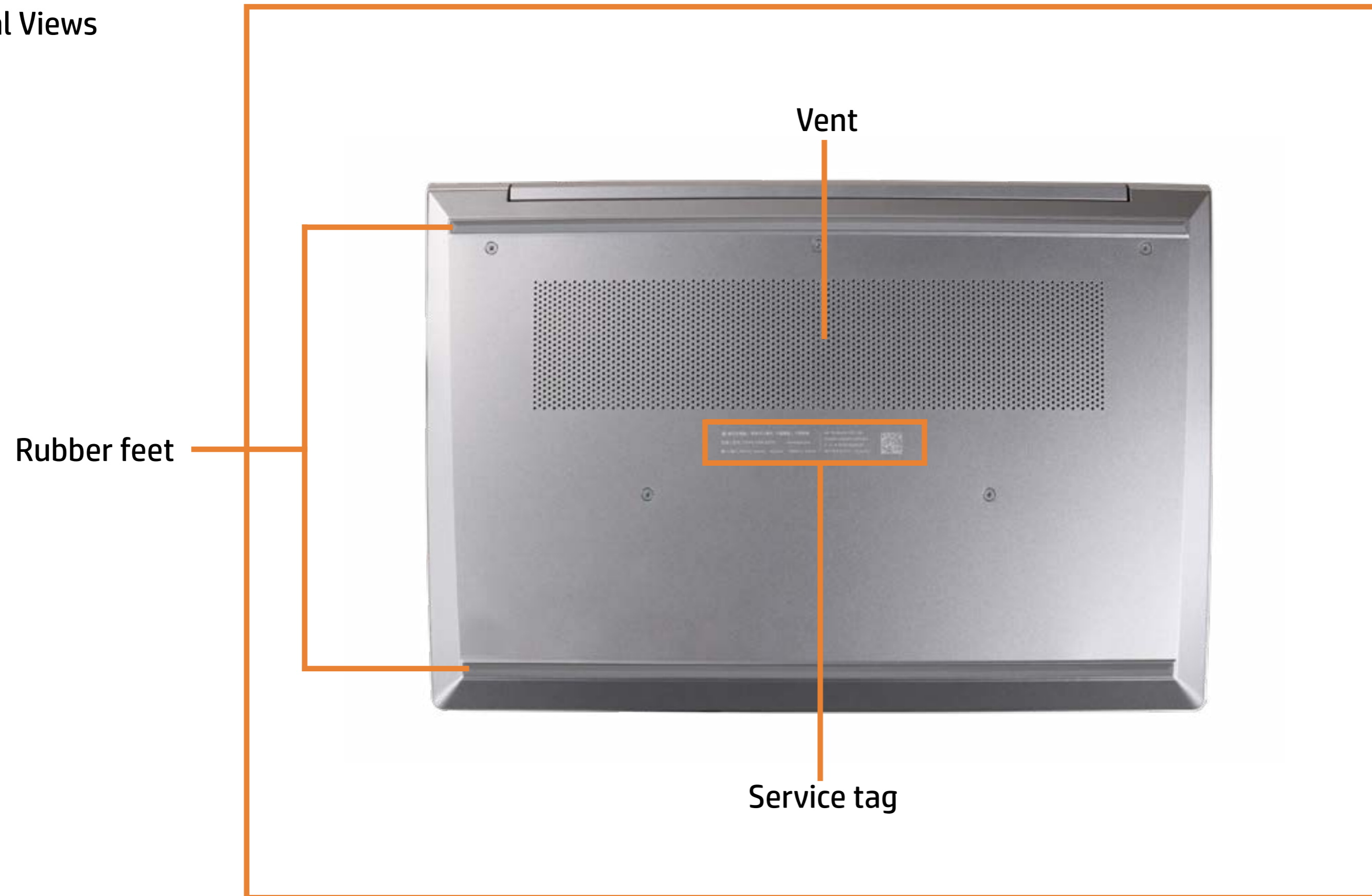
[Back to External Views](#)



[Go to Parts List](#)

Bottom View

[Back to External Views](#)



[Go to Parts List](#)

Base Enclosure

Base Enclosure

- Battery
- Memory Modules
- M.2 Solid State Drive
- Wireless LAN Module
- Heat Sink (UMA)
- Fan
- RTC Battery
- Speakers
- Fingerprint Reader
- Touchpad
- System Board (Top)
- System Board (Bottom)
- DC-In Connector
- Top Cover with Keyboard
- Display Panel Assembly
- Display Bezel
- Webcam
- Hinges
- Display Panel
- Display Panel Cable
- Wireless LAN Antennas



[Go to External Views](#)

Battery

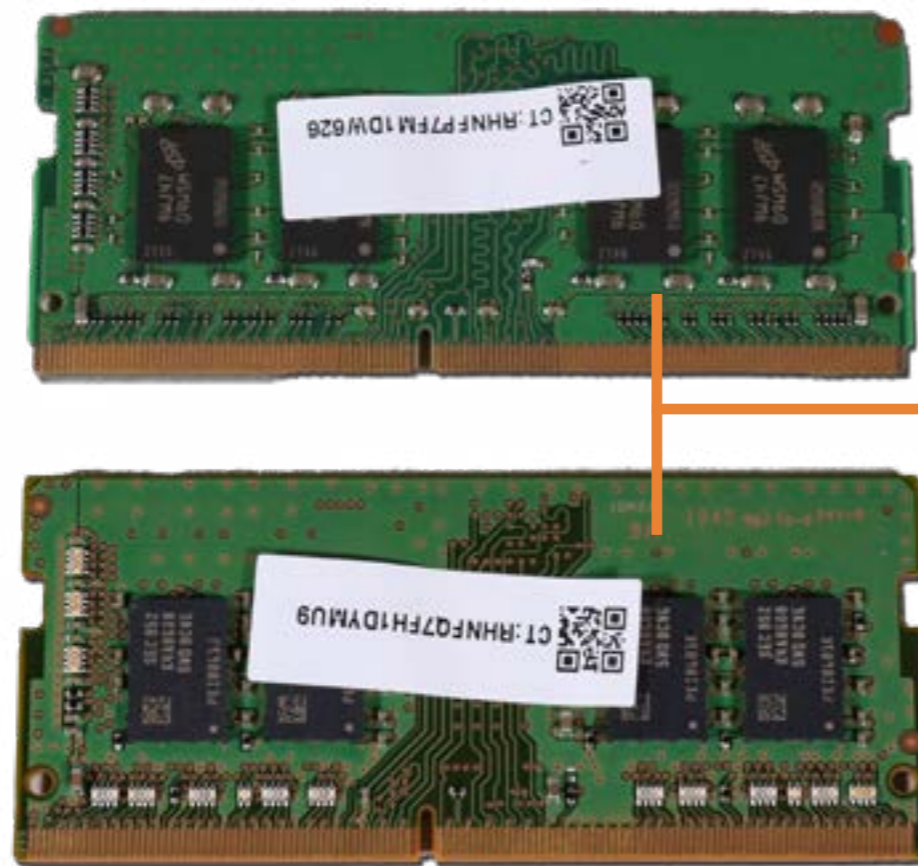
- Base Enclosure
- Battery**
- Memory Modules
- M.2 Solid State Drive
- Wireless LAN Module
- Heat Sink (UMA)
- Fan
- RTC Battery
- Speakers
- Fingerprint Reader
- Touchpad
- System Board (Top)
- System Board (Bottom)
- DC-In Connector
- Top Cover with Keyboard
- Display Panel Assembly
- Display Bezel
- Webcam
- Hinges
- Display Panel
- Display Panel Cable
- Wireless LAN Antennas



Go to External Views

Memory Modules

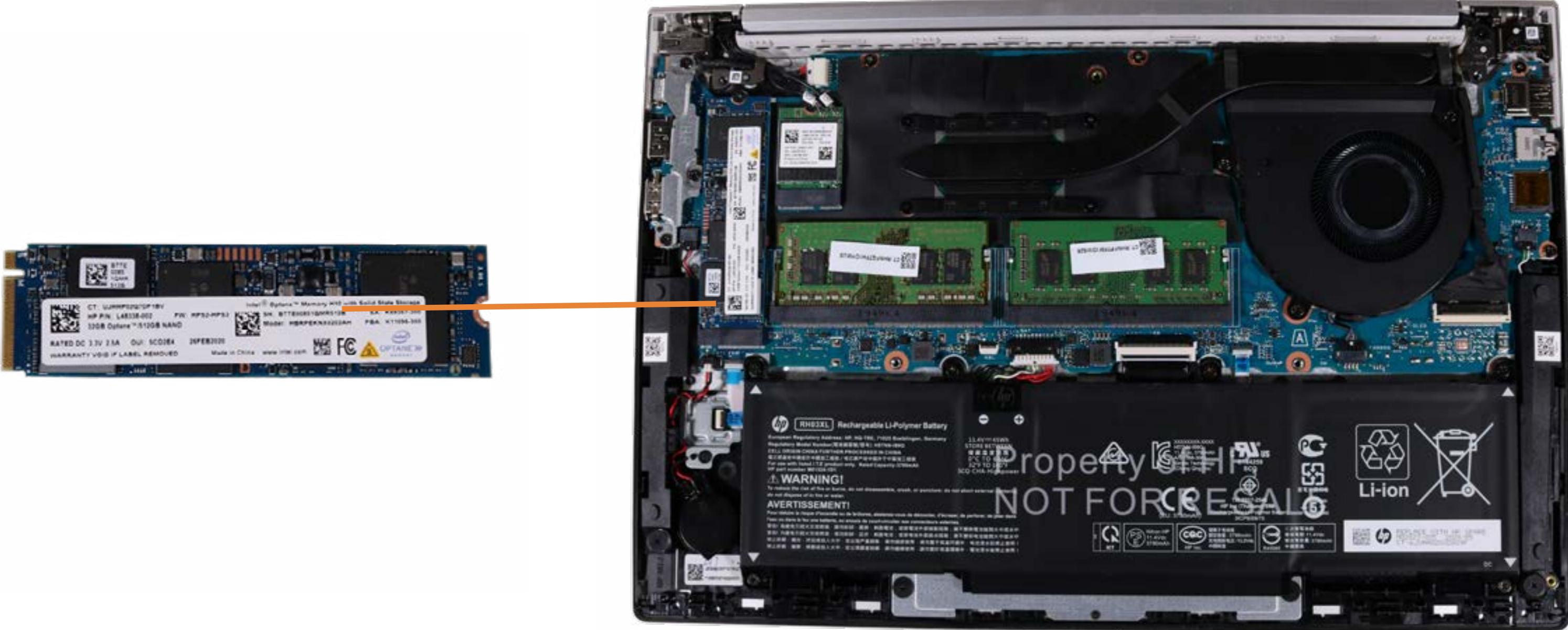
- Base Enclosure
- Battery
- Memory Modules**
- M.2 Solid State Drive
- Wireless LAN Module
- Heat Sink (UMA)
- Fan
- RTC Battery
- Speakers
- Fingerprint Reader
- Touchpad
- System Board (Top)
- System Board (Bottom)
- DC-In Connector
- Top Cover with Keyboard
- Display Panel Assembly
- Display Bezel
- Webcam
- Hinges
- Display Panel
- Display Panel Cable
- Wireless LAN Antennas



Go to External Views

M.2 Solid State Drive

- Base Enclosure
- Battery
- Memory Modules
- M.2 Solid State Drive**
- Wireless LAN Module
- Heat Sink (UMA)
- Fan
- RTC Battery
- Speakers
- Fingerprint Reader
- Touchpad
- System Board (Top)
- System Board (Bottom)
- DC-In Connector
- Top Cover with Keyboard
- Display Panel Assembly
- Display Bezel
- Webcam
- Hinges
- Display Panel
- Display Panel Cable
- Wireless LAN Antennas



Go to External Views

Wireless LAN Module

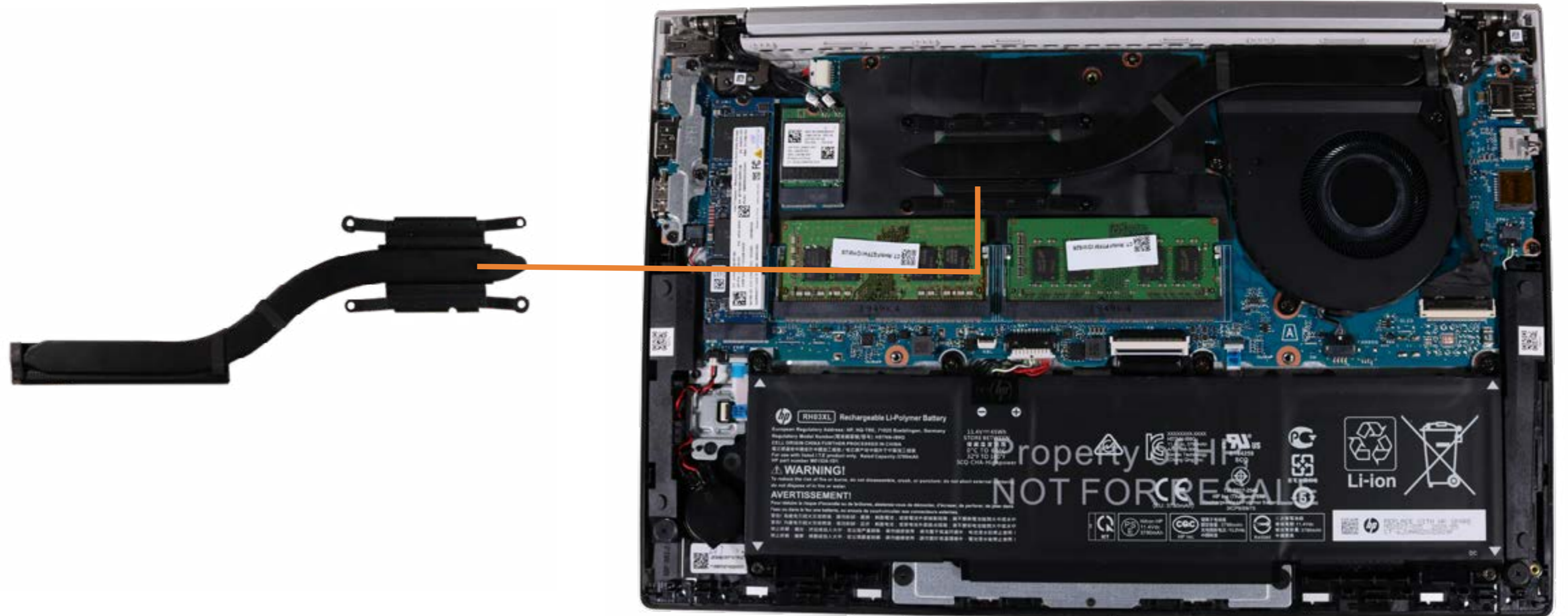
- Base Enclosure
- Battery
- Memory Modules
- M.2 Solid State Drive
- Wireless LAN Module**
- Heat Sink (UMA)
- Fan
- RTC Battery
- Speakers
- Fingerprint Reader
- Touchpad
- System Board (Top)
- System Board (Bottom)
- DC-In Connector
- Top Cover with Keyboard
- Display Panel Assembly
- Display Bezel
- Webcam
- Hinges
- Display Panel
- Display Panel Cable
- Wireless LAN Antennas



Go to External Views

Heat Sink (UMA)

- Base Enclosure
- Battery
- Memory Modules
- M.2 Solid State Drive
- Wireless LAN Module
- Heat Sink (UMA)**
- Fan
- RTC Battery
- Speakers
- Fingerprint Reader
- Touchpad
- System Board (Top)
- System Board (Bottom)
- DC-In Connector
- Top Cover with Keyboard
- Display Panel Assembly
- Display Bezel
- Webcam
- Hinges
- Display Panel
- Display Panel Cable
- Wireless LAN Antennas



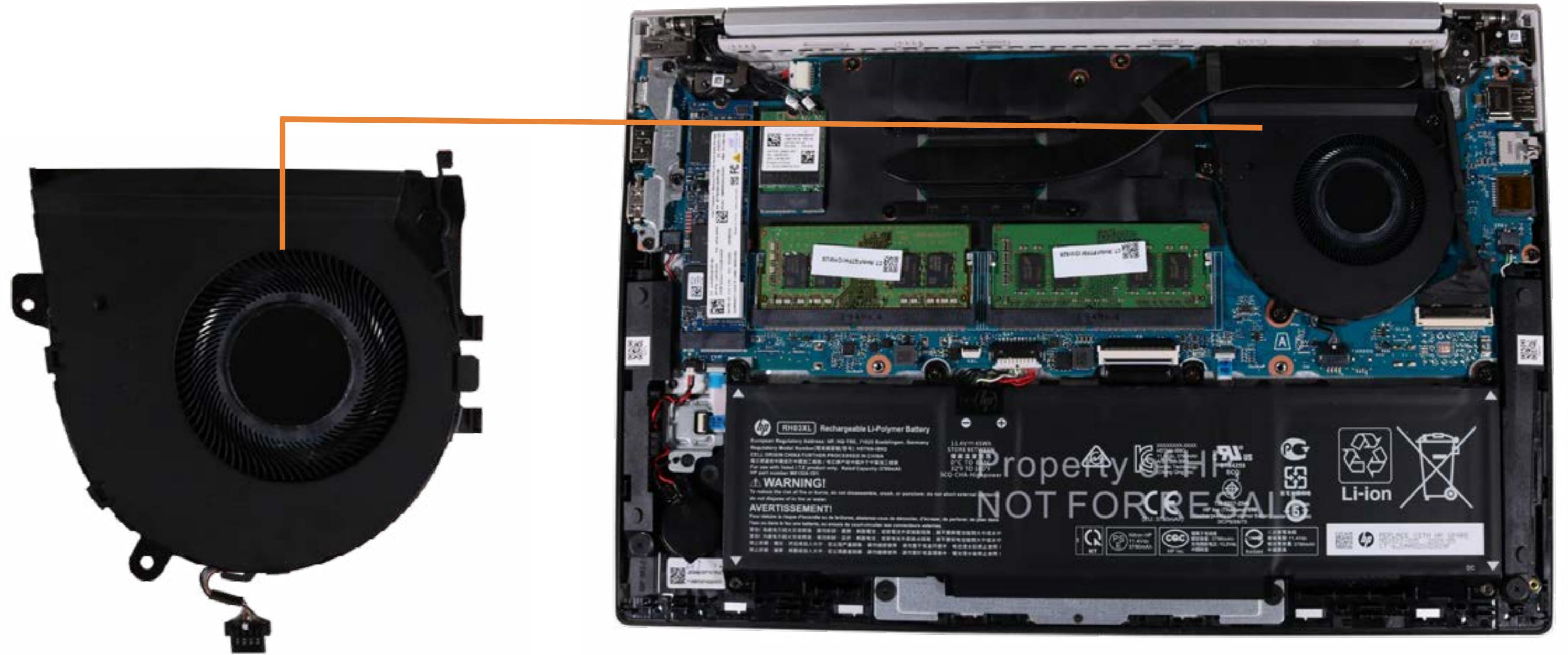
Go to External Views

Fan

- Base Enclosure
- Battery
- Memory Modules
- M.2 Solid State Drive
- Wireless LAN Module
- Heat Sink (UMA)

Fan

- RTC Battery
- Speakers
- Fingerprint Reader
- Touchpad
- System Board (Top)
- System Board (Bottom)
- DC-In Connector
- Top Cover with Keyboard
- Display Panel Assembly
- Display Bezel
- Webcam
- Hinges
- Display Panel
- Display Panel Cable
- Wireless LAN Antennas



Go to External Views

RTC Battery

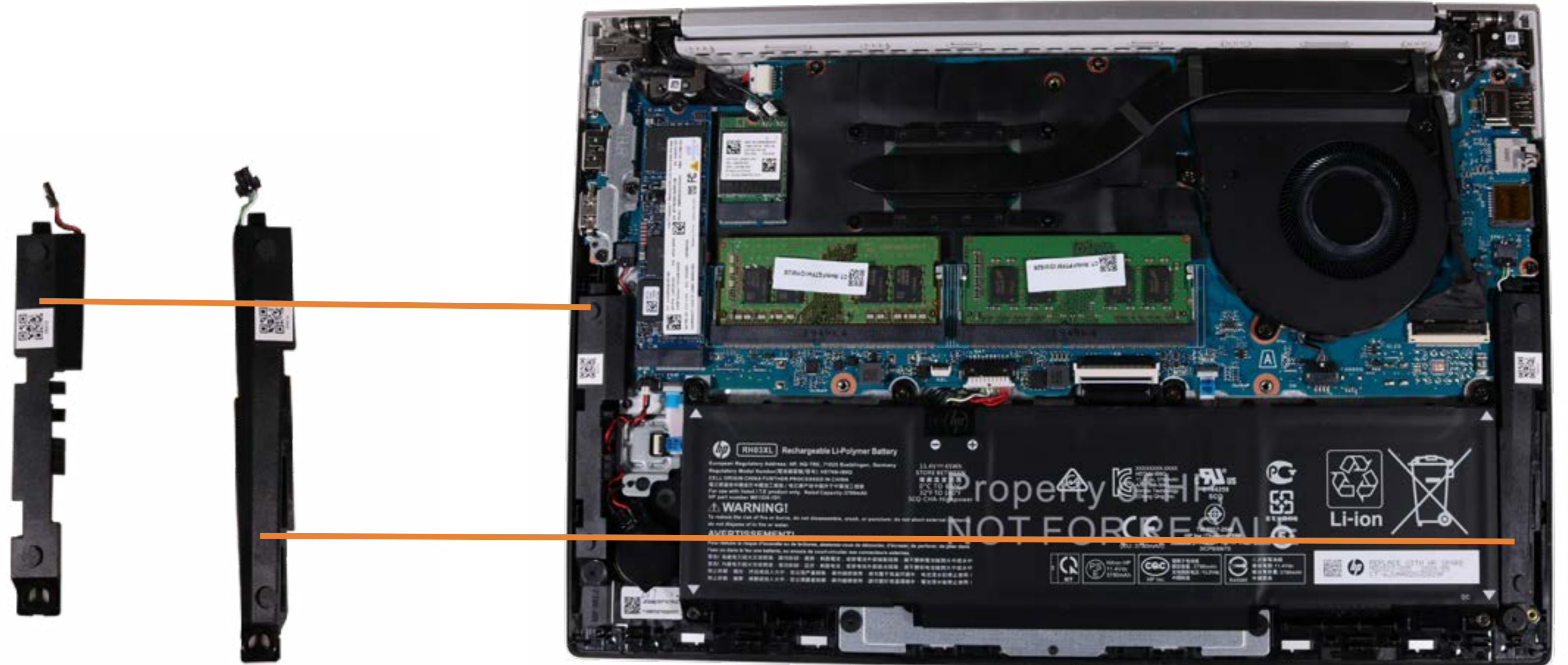
- Base Enclosure
- Battery
- Memory Modules
- M.2 Solid State Drive
- Wireless LAN Module
- Heat Sink (UMA)
- Fan
- RTC Battery**
- Speakers
- Fingerprint Reader
- Touchpad
- System Board (Top)
- System Board (Bottom)
- DC-In Connector
- Top Cover with Keyboard
- Display Panel Assembly
- Display Bezel
- Webcam
- Hinges
- Display Panel
- Display Panel Cable
- Wireless LAN Antennas



Go to External Views

Speakers

- Base Enclosure
- Battery
- Memory Modules
- M.2 Solid State Drive
- Wireless LAN Module
- Heat Sink (UMA)
- Fan
- RTC Battery
- Speakers**
- Fingerprint Reader
- Touchpad
- System Board (Top)
- System Board (Bottom)
- DC-In Connector
- Top Cover with Keyboard
- Display Panel Assembly
- Display Bezel
- Webcam
- Hinges
- Display Panel
- Display Panel Cable
- Wireless LAN Antennas



Go to External Views

Fingerprint Reader

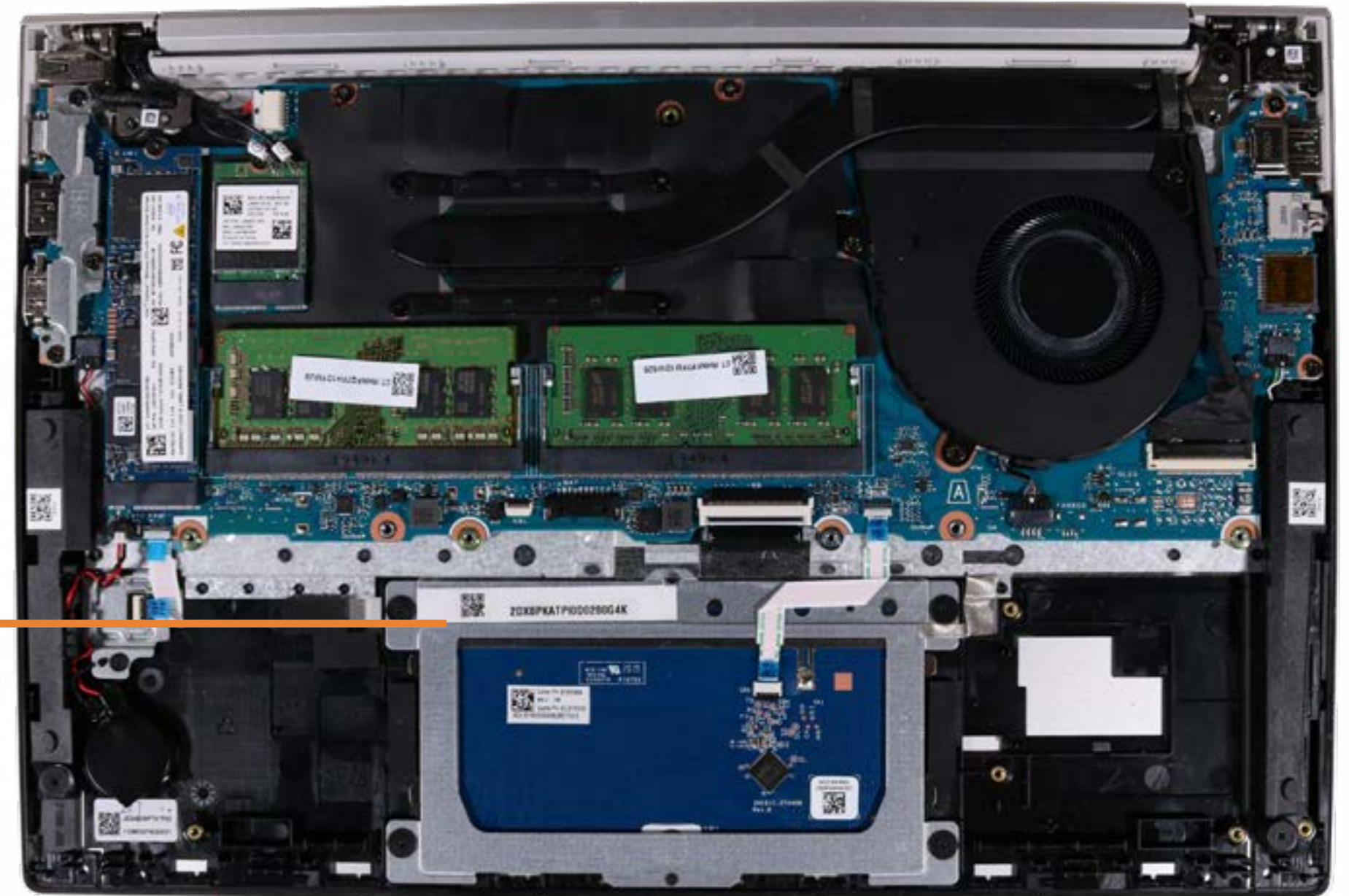
- Base Enclosure
- Battery
- Memory Modules
- M.2 Solid State Drive
- Wireless LAN Module
- Heat Sink (UMA)
- Fan
- RTC Battery
- Speakers
- Fingerprint Reader**
- Touchpad
- System Board (Top)
- System Board (Bottom)
- DC-In Connector
- Top Cover with Keyboard
- Display Panel Assembly
- Display Bezel
- Webcam
- Hinges
- Display Panel
- Display Panel Cable
- Wireless LAN Antennas



Go to External Views

Touchpad

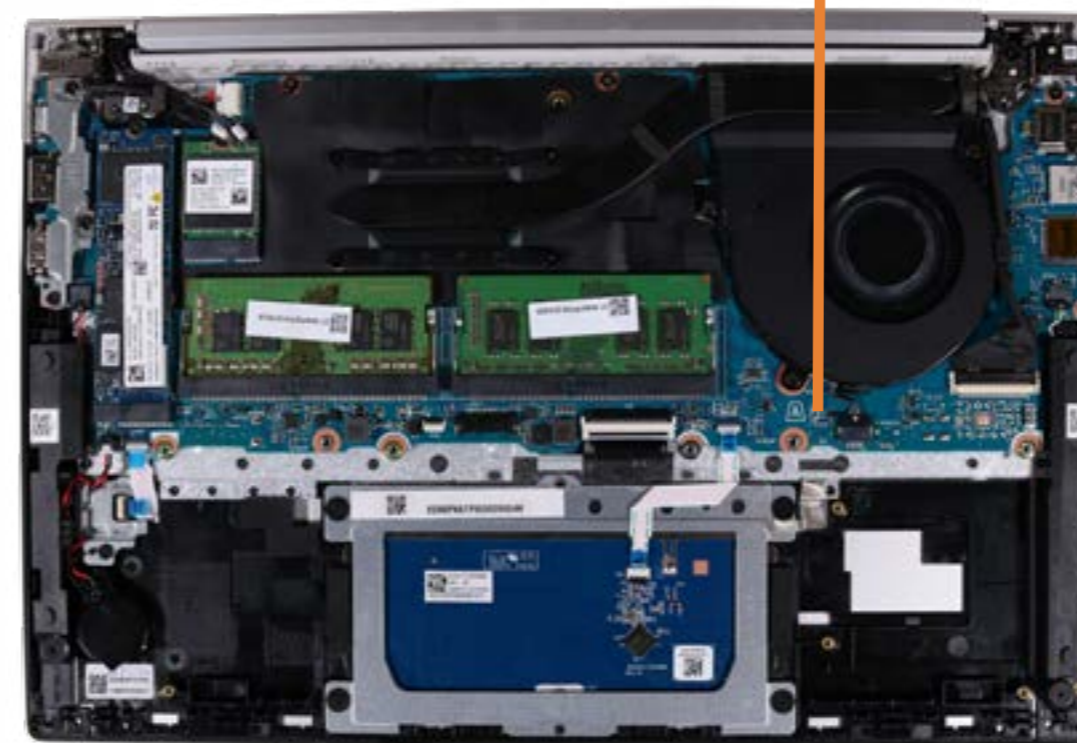
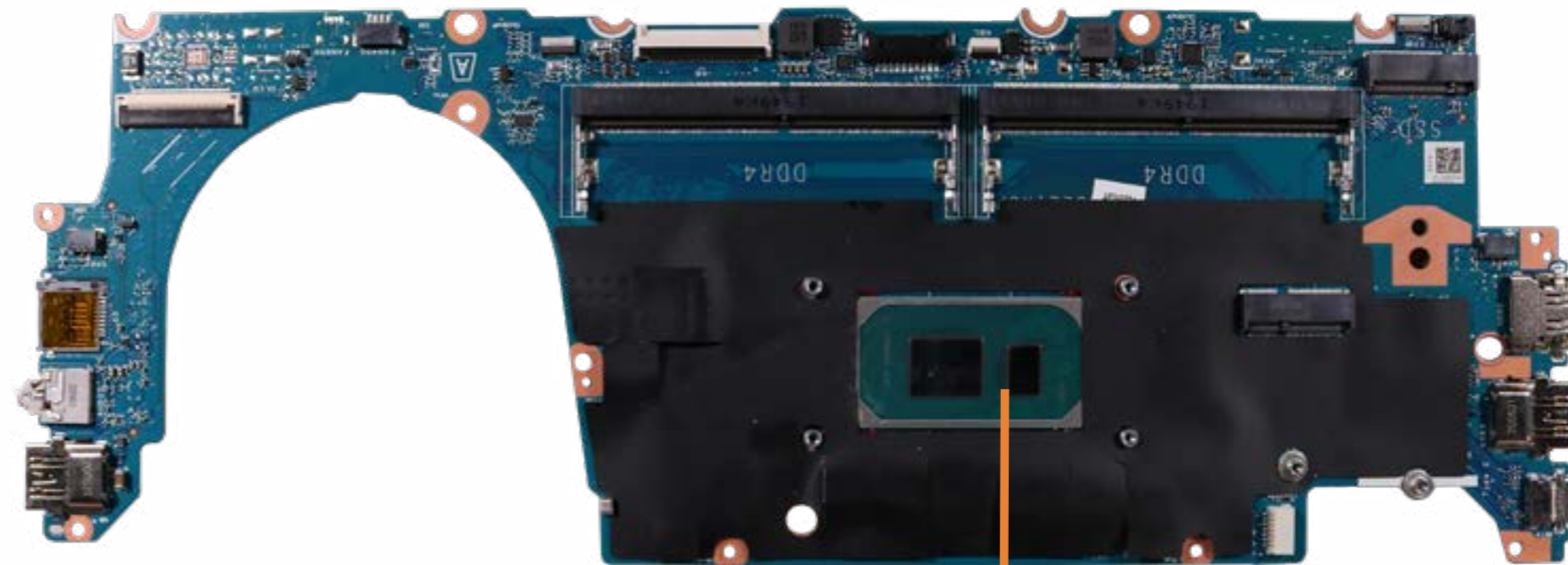
- Base Enclosure
- Battery
- Memory Modules
- M.2 Solid State Drive
- Wireless LAN Module
- Heat Sink (UMA)
- Fan
- RTC Battery
- Speakers
- Fingerprint Reader
- Touchpad**
- System Board (Top)
- System Board (Bottom)
- DC-In Connector
- Top Cover with Keyboard
- Display Panel Assembly
- Display Bezel
- Webcam
- Hinges
- Display Panel
- Display Panel Cable
- Wireless LAN Antennas



Go to External Views

System Board (Top)

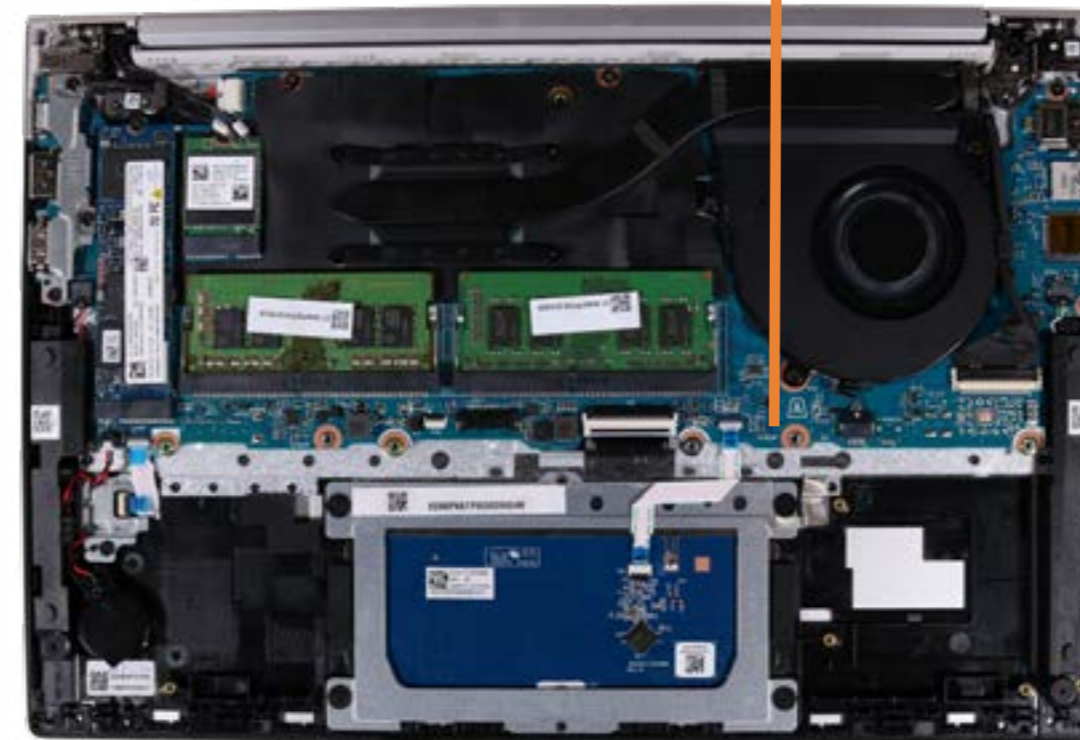
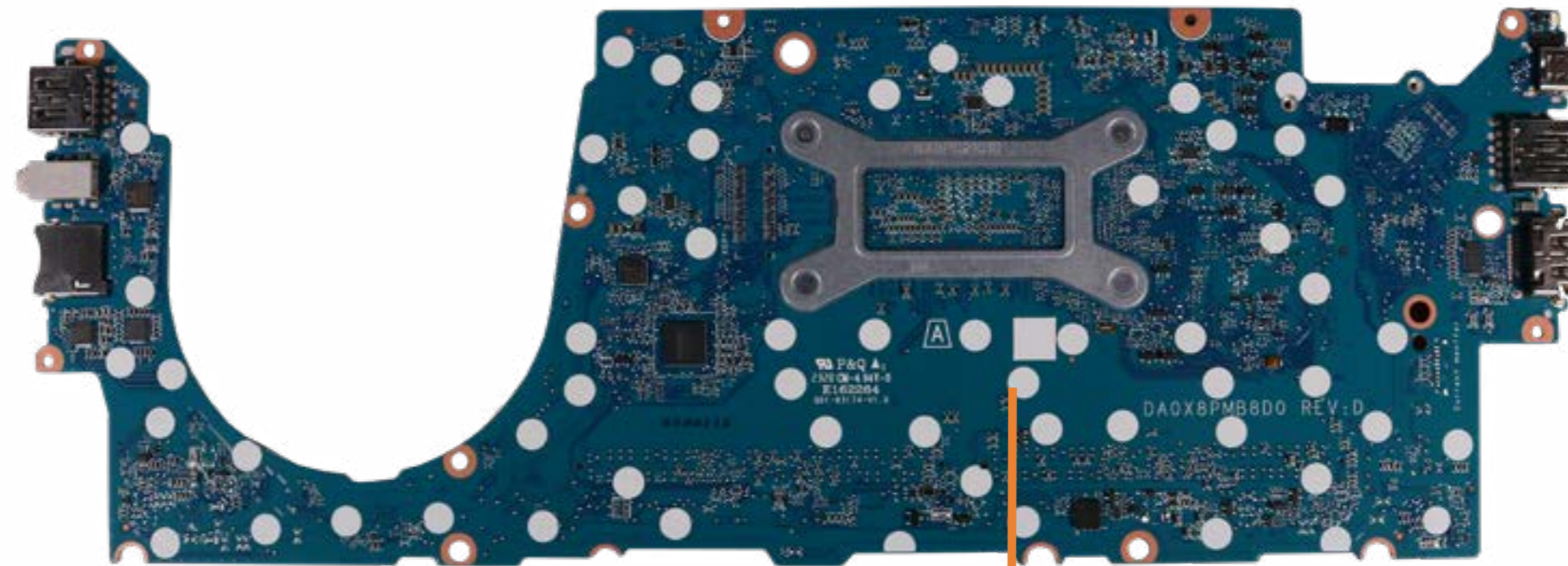
- Base Enclosure
- Battery
- Memory Modules
- M.2 Solid State Drive
- Wireless LAN Module
- Heat Sink (UMA)
- Fan
- RTC Battery
- Speakers
- Fingerprint Reader
- Touchpad
- System Board (Top)**
- System Board (Bottom)
- DC-In Connector
- Top Cover with Keyboard
- Display Panel Assembly
- Display Bezel
- Webcam
- Hinges
- Display Panel
- Display Panel Cable
- Wireless LAN Antennas



[Go to External Views](#)

System Board (Bottom)

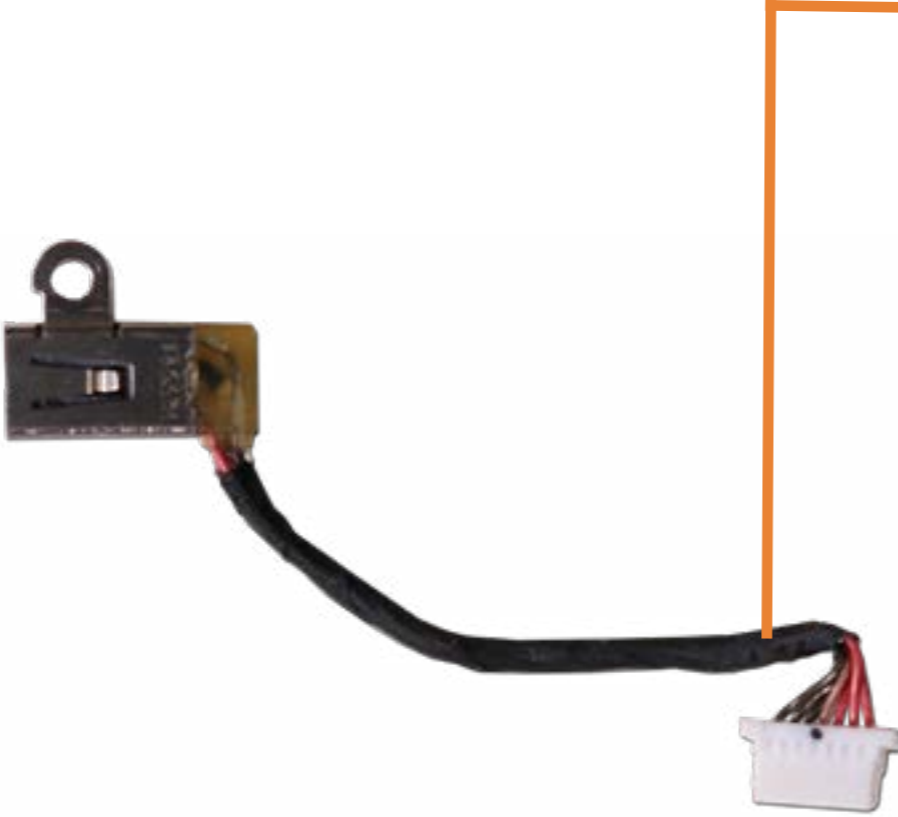
- Base Enclosure
- Battery
- Memory Modules
- M.2 Solid State Drive
- Wireless LAN Module
- Heat Sink (UMA)
- Fan
- RTC Battery
- Speakers
- Fingerprint Reader
- Touchpad
- System Board (Top)
- System Board (Bottom)**
- DC-In Connector
- Top Cover with Keyboard
- Display Panel Assembly
- Display Bezel
- Webcam
- Hinges
- Display Panel
- Display Panel Cable
- Wireless LAN Antennas



[Go to External Views](#)

DC-In Connector

- Base Enclosure
- Battery
- Memory Modules
- M.2 Solid State Drive
- Wireless LAN Module
- Heat Sink (UMA)
- Fan
- RTC Battery
- Speakers
- Fingerprint Reader
- Touchpad
- System Board (Top)
- System Board (Bottom)
- DC-In Connector**
- Top Cover with Keyboard
- Display Panel Assembly
- Display Bezel
- Webcam
- Hinges
- Display Panel
- Display Panel Cable
- Wireless LAN Antennas



Go to External Views

Top Cover with Keyboard

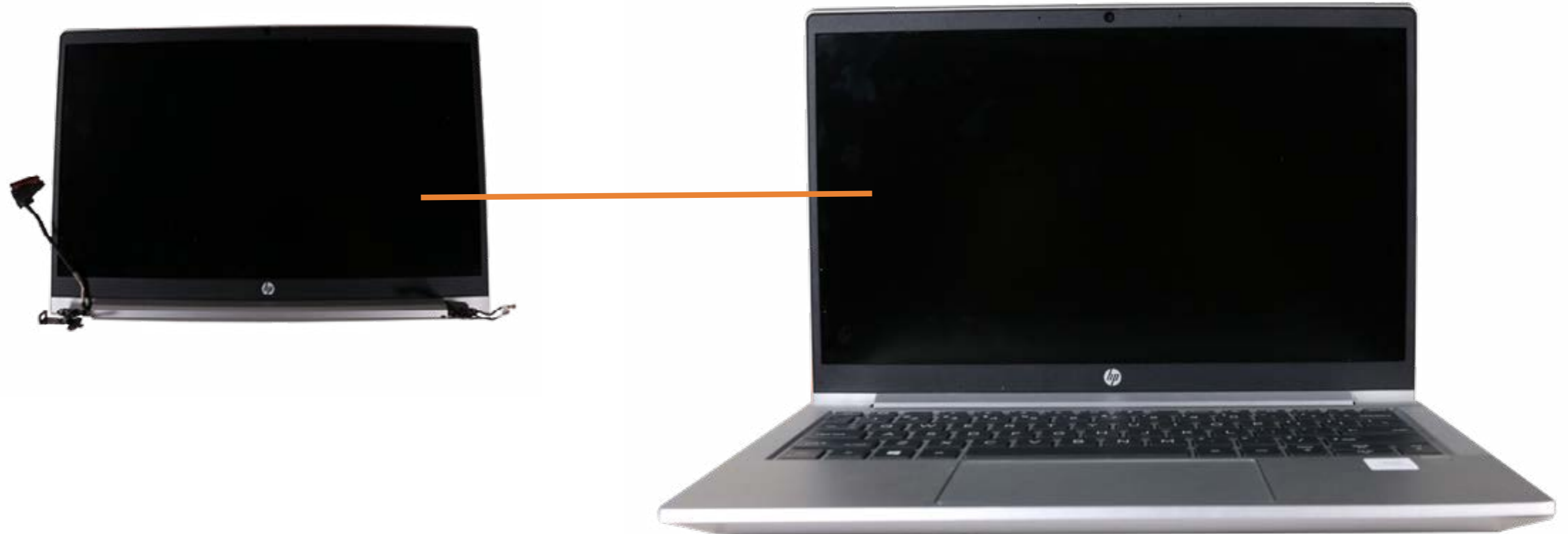
- Base Enclosure
- Battery
- Memory Modules
- M.2 Solid State Drive
- Wireless LAN Module
- Heat Sink (UMA)
- Fan
- RTC Battery
- Speakers
- Fingerprint Reader
- Touchpad
- System Board (Top)
- System Board (Bottom)
- DC-In Connector
- Top Cover with Keyboard**
- Display Panel Assembly
- Display Bezel
- Webcam
- Hinges
- Display Panel
- Display Panel Cable
- Wireless LAN Antennas



Go to External Views

Display Panel Assembly

- Base Enclosure
- Battery
- Memory Modules
- M.2 Solid State Drive
- Wireless LAN Module
- Heat Sink (UMA)
- Fan
- RTC Battery
- Speakers
- Fingerprint Reader
- Touchpad
- System Board (Top)
- System Board (Bottom)
- DC-In Connector
- Top Cover with Keyboard
- Display Panel Assembly**
- Display Bezel
- Webcam
- Hinges
- Display Panel
- Display Panel Cable
- Wireless LAN Antennas



[Go to External Views](#)

Display Bezel

- Base Enclosure
- Battery
- Memory Modules
- M.2 Solid State Drive
- Wireless LAN Module
- Heat Sink (UMA)
- Fan
- RTC Battery
- Speakers
- Fingerprint Reader
- Touchpad
- System Board (Top)
- System Board (Bottom)
- DC-In Connector
- Top Cover with Keyboard
- Display Panel Assembly
- Display Bezel**
- Webcam
- Hinges
- Display Panel
- Display Panel Cable
- Wireless LAN Antennas



[Go to External Views](#)

Webcam

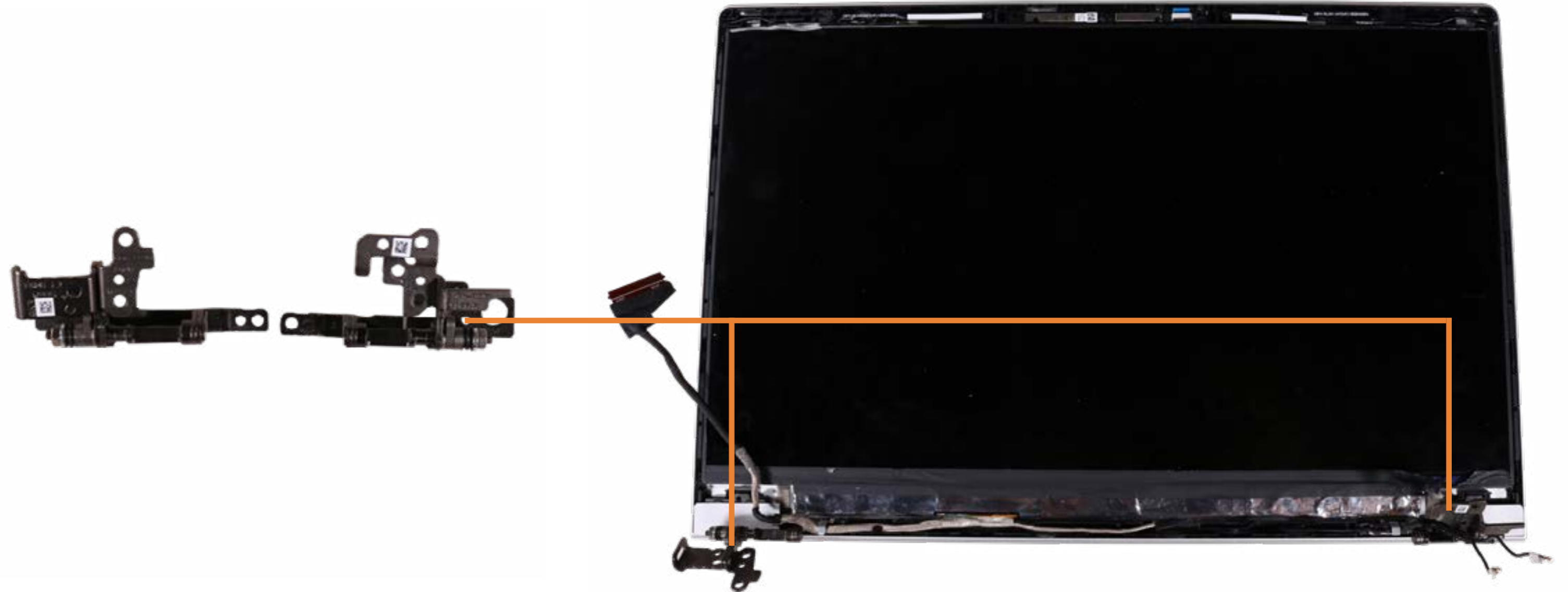
- Base Enclosure
- Battery
- Memory Modules
- M.2 Solid State Drive
- Wireless LAN Module
- Heat Sink (UMA)
- Fan
- RTC Battery
- Speakers
- Fingerprint Reader
- Touchpad
- System Board (Top)
- System Board (Bottom)
- DC-In Connector
- Top Cover with Keyboard
- Display Panel Assembly
- Display Bezel
- Webcam**
- Hinges
- Display Panel
- Display Panel Cable
- Wireless LAN Antennas



[Go to External Views](#)

Hinges

- Base Enclosure
- Battery
- Memory Modules
- M.2 Solid State Drive
- Wireless LAN Module
- Heat Sink (UMA)
- Fan
- RTC Battery
- Speakers
- Fingerprint Reader
- Touchpad
- System Board (Top)
- System Board (Bottom)
- DC-In Connector
- Top Cover with Keyboard
- Display Panel Assembly
- Display Bezel
- Webcam
- Hinges**
- Display Panel
- Display Panel Cable
- Wireless LAN Antennas



[Go to External Views](#)

Display Panel

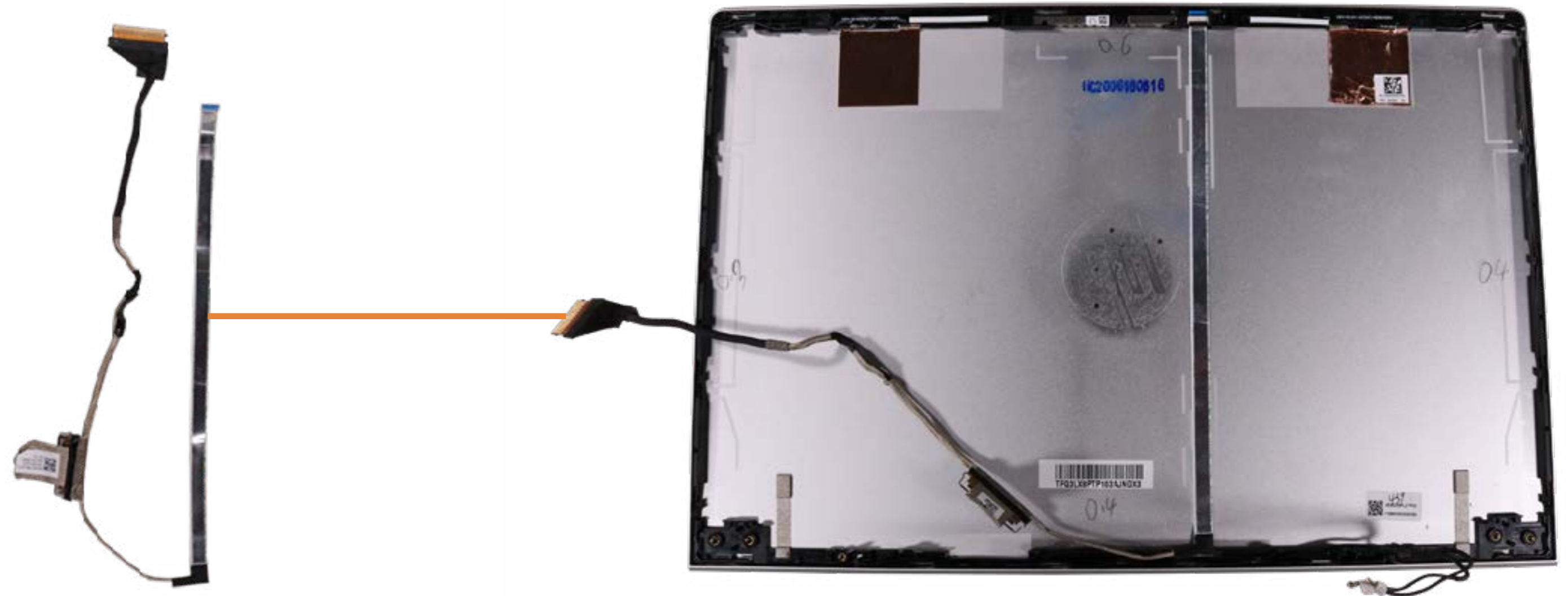
- Base Enclosure
- Battery
- Memory Modules
- M.2 Solid State Drive
- Wireless LAN Module
- Heat Sink (UMA)
- Fan
- RTC Battery
- Speakers
- Fingerprint Reader
- Touchpad
- System Board (Top)
- System Board (Bottom)
- DC-In Connector
- Top Cover with Keyboard
- Display Panel Assembly
- Display Bezel
- Webcam
- Hinges
- Display Panel**
- Display Panel Cable
- Wireless LAN Antennas



[Go to External Views](#)

Display Panel Cable

- Base Enclosure
- Battery
- Memory Modules
- M.2 Solid State Drive
- Wireless LAN Module
- Heat Sink (UMA)
- Fan
- RTC Battery
- Speakers
- Fingerprint Reader
- Touchpad
- System Board (Top)
- System Board (Bottom)
- DC-In Connector
- Top Cover with Keyboard
- Display Panel Assembly
- Display Bezel
- Webcam
- Hinges
- Display Panel
- Display Panel Cable**
- Wireless LAN Antennas



[Go to External Views](#)

Wireless LAN Antennas

- Base Enclosure
- Battery
- Memory Modules
- M.2 Solid State Drive
- Wireless LAN Module
- Heat Sink (UMA)
- Fan
- RTC Battery
- Speakers
- Fingerprint Reader
- Touchpad
- System Board (Top)
- System Board (Bottom)
- DC-In Connector
- Top Cover with Keyboard
- Display Panel Assembly
- Display Bezel
- Webcam
- Hinges
- Display Panel
- Display Panel Cable
- Wireless LAN Antennas**



[Go to External Views](#)